

Marine Products

Jumho Electric | 2008

Intelligent Instrument

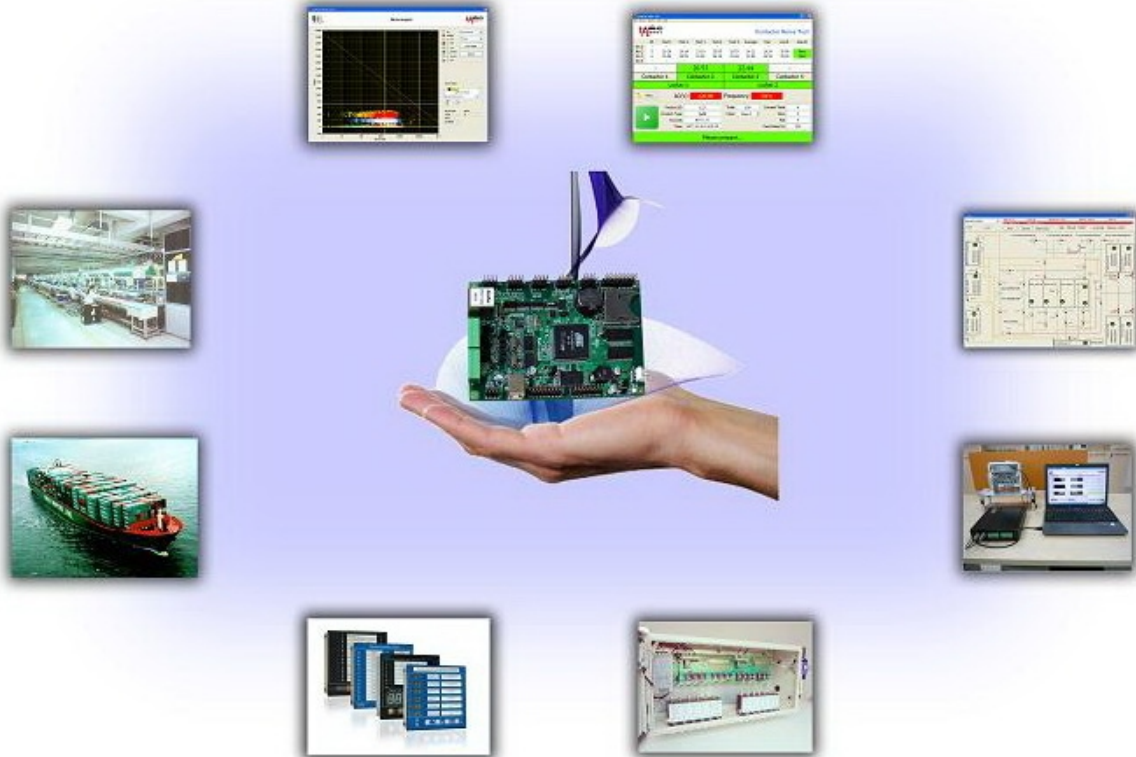
Based On FPGA and ARM Technology
Easy-of-use, Re-configuration

Marine Industry

Marine Automation
Alarm Monitoring, Valve Remote Control

Remote Data Acquisition Module

HYPO Series I/O Module
Wide Range I/O Points



Jumho Electric

www.jumho.cn



HYPO Series Intelligent Instrument

Based On FPGA and ARM Technology

Jumho Electric Intelligent instruments are based on new technology like FPGA and ARM. We created innovated device which targeted on some high-end industry. Our instruments are easy-of-use and add some reconfigurable features.

- Customized panel, visual display
- Build-in programmable alarm monitoring
- MODBUS communication protocol



RWU/LCD Remote Watch Unit



RWU/LCD is an intelligent LCD remote watch unit, transmitting alarm messages from monitoring computer to living areas, including public room and engineer living room.

- Alarm LCD display
- Sound and light alarm
- Alarm reset and silence
- LED lightness adjusting
- Remote display, connected to PC, fire alarm system, engineer calling system

X3200 Analog and Digital Input Monitor



X3200 is analog and digital monitor instrument used to acquire 6 channels analog and 6 channels digital signals. This instrument can be directly imported 6-channel analog (4-20mA) and 6-channel digital (passive) with results displaying directly on the panel.

- 6 channels analog input
- 6 channels digital input
- Sound and light alarm output

A2210 Water Ingress Alarm Unit

A2210 supports up to 20 channel sensor signal input. A2210 can be used for multi-channel monitoring systems, such as ship water ingress alarm system. It is visual display compared with the traditional computer monitor. Each channel's text can be customized by user themselves and will be replaced conveniently.

- 20 channel alarm display
- Module interconnection



M1200 Universal Analog Input Monitor

M1200 is universal analog input instrument, monitoring 16-channel analog signals, which will be circuit display or single display with high accuracy. It is ingenious design, convenient installation.

- 16 channels circuit display or single display
- Sound and light alarm output
- Exceed-limit alarm, alarm memory
- Remote display, connected to PC



RWU/LED Remote Watch Unit



RWU/LED is an intelligent remote alarm unit, transmitting alarm messages from monitoring computer to living areas, including public room and engineer living room.

- 10 groups alarm display
- Sound and light alarm
- Alarm reset and silence
- LED lightness adjusting

D2200 Digital Input Instrument



D2200 is 16-channel digital input module. Each channel status can be directly displayed on the module panel. D2200 has 3-channel relay output controlling external sound and light alarm device or other equipments. Each channel's name on the panel can be customized by users themselves.

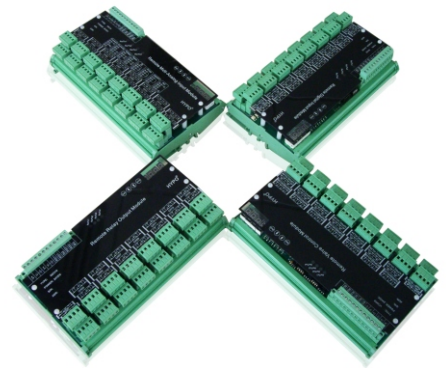
- 16 channels digital input
- Sound and light alarm output

Remote Data Acquisition Module

Based On FPGA and ARM Technology

HYPO series remote I/O modules provide wide range I/O points for industrial control and signal conditioning. Our product line includes analog input/output, digital I/O, RS232-485 gate way and software. HYPO series I/O modules also support the industrial standard Modbus protocol and can be programmed by LabVIEW, C, VB.

- Build-in programmable alarm monitoring
- MODBUS communication protocol



SAI16 Remote Analog Input Module



- 16 channels analog signals input
- Versatile-analog signal input
 - Voltage, current (0-20mA, 4-20mA)
 - Thermocouple, RTD
- ADC Resolution: 16 bit
- Isolation: channel-to-channel 400V
- Update rate: 1s/all channels
- 18-32VDC, 500mW
- Up to -5°C~55°C operating range
- Standard DIN35 installation

SDI32 Remote Digital Input



- 32 channels digital signals input
- Signal type: 18-24VDC
- Update rate: 200Hz/channel
- Status LED display
- 18-32VDC, 500mW
- Up to -5°C~55°C operating range
- Standard DIN35 installation

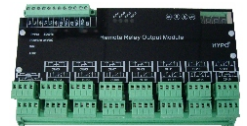
SAO16 Remote Analog Output Module

- 16 channels analog signals output
- Versatile-analog signal output
 - Voltage(0-10V), current (0-20mA, 4-20mA)
- Resolution: 12 bit
- Update rate: 1s/all channels
- 18-32VDC, 500mW
- Up to -5°C~55°C operating range
- Standard DIN35 installation



SDO16 Remote Relay Output Module

- 16 channels digital output
- Signal type: 250VDC, 10A
- Status LED display
- 18-32VDC, 500mW
- Up to -5°C~55°C operating range
- Standard DIN35 installation



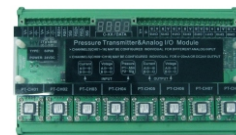
VCM08 Remote Valve Control Module



VCM08 is 8-channel valve control module. The module can automatically control all kind of valves. The address and communication baud rate of module set by button on PCB or computer, and Each channel's value will display on the 7 segment LED in turn.

- 8 channels valve control output
Each channel including:
 - 1 valve return signal(2 DI or 1 AI)
 - 2 relay output: 250VAC, 10A
- Valve return signal: digital signal (passive), pulse signal or resistance signal
- Valve status 7 segment LED display

SIP08 Pressure Transmitter&Analog I/O Module



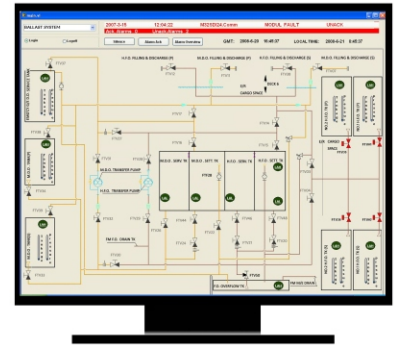
SIP08 is an intelligent 8 channel pressure data acquisition module. It can directly show each channel's measurement value and work independently, even if the PC can't work normally.

- 8 channels pressure signal input
- Pressure range: 0-500mbar (different range optional)
- Status display in 7 segment LED in turn
- 18-32VDC, 500mW
- Up to -5°C~55°C operating range
- Standard DIN35 installation

Marine Industry

Proprietary Intellectual Property Rights of Marine Automation Products

Jumho electric concentrated on producing bus-based distributed I/O for marine industry many years and out high qualified engineer will implement the innovations of this particular field. Jumho electric designs and produces complete water ingress alarm system, watch alarm system, navigation light controller, signal light controller and other marine electrical system according to clients' specifications.



SIO16 RS232/485/Modbus Gateway



SIO16 is 16-channel gateway module with channel-to-channel optical isolation and can connected with 16 channels communication input (RS232, 485, Modbus), converting them into two redundant RS485 output. Multiple devices can be connected at the same time and this star connection will make industrial network structure more stability.

- Automatically adapt to different Modbus modules
- Data compression, improve efficiency

X4200 BarGraph Indicator



X4200 is a panel indicator intended for monitoring 4~20mA analog input signal such as temperature, pressure, liquid level etc.

- Based on FPGA technology
- Four LED digital display
- Real-time bargraph analog display
- High resolution, strong stability

X4300 Watch Alarm System



X4300 is widely used as watch alarm system in large and medium-sized ships. Press the button in the X4300 panel to set the alarm time which up to 15 minutes.

- Alarm time setting
- Sound and light alarm
- Alarm reset function
- LED lightness adjusting

X4500 Hospital Calling System



X4500 is widely used in large and medium-sized ships. When the emergency things happen, the people can push the button to call the doctor. There will be sound and light alarm in the alarm unit.

- 1 channel alarm display
- Sound and light alarm
- Alarm reset function
- LED lightness adjusting

X4600 Refrigerator Calling System



X4600 is widely used in large and medium-sized ships. When emergency things happen, the people can push the button in the refrigerator. There will be sound and light alarm in the alarm unit.

- 4 channel alarm display
- Sound and light alarm
- Alarm reset function
- LED lightness adjusting

X4400 Engineer Calling System

X4400 is widely used in bridge room or engineer control room of all kinds ships to contact with engineers in engineer living room.

- 6 channel engineer calling
- Sound and light alarm
- LED lightness adjusting



L1200 Navigation Light Controller

The navigation light controller is to control, indicate and send signals of the ship so as to show the condition and situation of the ship.

- 26-channel light control
- Touch technology
- Sound and light alarm
- Text backlight display
- LED lightness adjusting



L2200 Signal Light Controller

The signal light controller is to control, indicate and send signals of the ship so as to show the condition and situation of the ship.

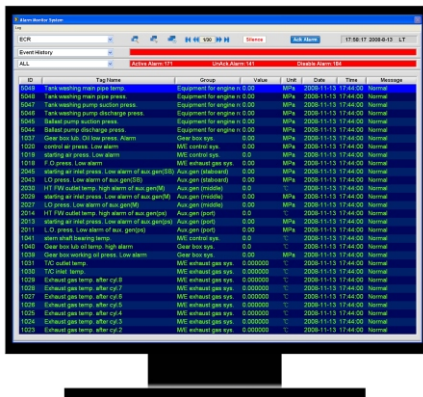
- 20-channel light control
- Touch technology
- Sound and light alarm
- Text backlight display
- LED lightness adjusting



Marine Large Complete-set System

Proprietary Intellectual Property Rights of Marine Automation Products

PC-based onboard electrical system is industry trend. Jumho Electric is responding to this demand with lots of high performance, cost-down solutions. Jumho designs and produces complete alarm and monitoring system, valve remote control system, electro-pneumatic level gauging system and other marine electrical system according to clients' specifications.



UMS1000 Universal Monitoring System

Alarm and monitoring system has been widely applied in vessels to watch over the sailing situations, which could greatly improve the safety and reliability of the ship sailing.

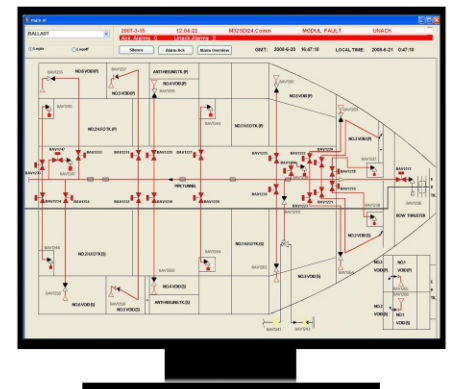
Alarm and monitoring system is divided into sensor, acquisition hardware and software. The purpose of a sensor is to convert a physical phenomenon (temperature, pressure, switch, etc.) into a measurable electrical signal, such as voltage or current. Jumho Electric provides professional data acquisition modules for connecting sensors like RTD, thermocouple, voltage input and 4-20mA input.

- Monitoring up to hundreds or thousands of signals simultaneously
- Signal type: versatile signal, temperature, voltage, current, speed etc.
- Real-time alarm data and history data displaying
- Real-time graph, bargraph and history data graph displaying
- CCS marine certification

VRCS1000 Valve Remote Control System

Valve Remote Control system is widely used in tank ship. Jumho Electric Valve Remote Control System represents experience, well-proven technology, and new up-to-date features. It can control up to thousands of valves simultaneously with easy-of-use PC human interface (HMI). Valve remote control system, including core subsystem: Valves, Hydraulic actuators, Hydraulic power unit, Electric valve control cabinet, Indication System and PC.

- Control up to 500 valves simultaneously
- Small, compact valve control hardware
- Approvals:
 - *Germanischer Lloyd*
 - *Chinese Classification Society*



ELGS1000 Electro-pneumatic level gauging system

ELGS1000 performs calculations of tank levels and drafts based on continuously on-line measured hydrostatic pressure, considering all various parameters affecting the correct levels and drafts such as fluid density, pipe resistance, atmospheric pressure etc. ELGS1000 using the electro-pneumatic principle "bubble measuring" has always been known as a very robust and reliable method.

- High accuracy with automatic calibration
- Measuring range: 0-35m
- Advanced capacitive pressure sensor, low air consumption
- Module based system, small dimensions, easy installation
- Cost efficient, low investment cost

Competence in Marine Automation

Partnership



Jumho Electric provides innovation, high-quality products and system solutions for marine and industrial applications worldwide.

Jumho Electric is always keen on new innovations.

Jumho Electric product lines are all with strong positions on the market, which are widely used in lots of industry area such as: industry automation, automated test equipment, marine electrical product, virtual instruments and software services.



Company Culture

- Honesty
- Innovation
- Never give up!

Company goal

- To be the global leader in the industry

Our opening platform combines different products together and also provides customized solutions.

We strive to give our customers highest possible benefits.



ISO 9001:2000



GL



CCS



高新技术企业证书

Jumho Electric



Headquarter

JUMHO ELECTRICAL(GUANGZHOU)CO.,LTD

No.15 Dagan Middle Road, Huangcun,
Tianhe, Guangzhou
510663, China

Phone: +86 (20) 6234 6488

Fax: +86 (20) 6234 6488

E-mail: jumho@jumho.cn
www.jumho.cn

JUMHO ELECTRICAL(HK)CO.,LIMITED

Rm 601-2 Chuk On Building.23 Mercer
Street.Sheung Wan.HONGKONG.49-51.
7B2-0308

Phone: (852) 2425 7777

Fax: (852) 2854 2875

E-mail: jumho@jumho.cn
www.jumho.cn